

# RoomMate by sensio



Discreet  
monitoring



Person-centred  
approach



Falls prevention



Fast support



Sound-free  
alerts



Reduced  
hospital visits



Reduced  
interruptions



Peace of mind



# RoomMate by sensio



Quietly Supporting  
*Your Safety and Independence*

## Your Peace of Mind, Our Priority

If you have any questions, please speak to your General Manager or contact a Sensio representative at [www.sensio.com](http://www.sensio.com) to learn more.

[www.crystalcarecollection.co.uk](http://www.crystalcarecollection.co.uk)

  
**Crystal Care**  
COLLECTION

Sensio is a trusted leader in care technology and their RoomMate system supports our teams to provide safe, person-centred care.

[www.crystalcarecollection.co.uk](http://www.crystalcarecollection.co.uk)

  
**Crystal Care**  
COLLECTION

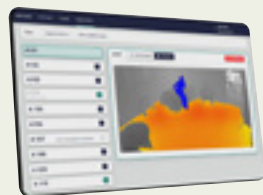
# Making every moment quietly count



RoomMate by Sensio is an acoustic monitoring safety sensor, discreetly located on the media wall in resident bedrooms and designed to support individual care needs whilst respecting privacy.

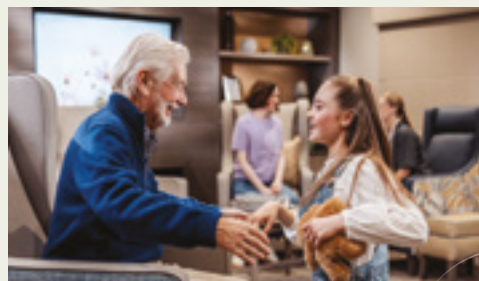
The sensor quietly helps care teams understand when support may be needed - without cameras, noise, or constant interruptions.

By using smart, thoughtful technology, RoomMate helps our care teams to spend more time doing what matters most: providing attentive, compassionate care to your loved ones.



*Sensio uses infrared technology to quickly alert team members of a fall or incident in a resident's room.*

## What this means for you and your family



✓ **Care shaped around you**  
RoomMate helps care teams build more personalised care plans by understanding routines, habits, and changes over time - so support is tailored to what you need, not a one-size-fits-all approach.

✓ **Falls prevention and faster support**  
By recognising early signs that someone may need help, RoomMate supports falls prevention and enables quicker responses when assistance is required.

✓ **Less intrusive care**  
Alerts are tailored to individual needs, reducing unnecessary checks and interruptions - especially at night. In addition to the RoomMate sensor and call bells, residents can wear a comfortable watch or pendant if that will provide further reassurance.

✓ **More independence, more privacy**  
There are no cameras or microphones and RoomMate uses coloured imagery rather than video so privacy is assured. Monitoring is discreet and only active when appropriate, helping residents remain independent while feeling safe.

✓ **Reassurance when incidents happen**  
If a fall or incident does occur, RoomMate helps care teams understand what happened by building a clear picture over time - giving families greater reassurance and confidence in the care being provided.

✓ **Helping spot changes early**  
By identifying patterns and trends, RoomMate can help care teams recognise when extra support may be needed - often reducing avoidable hospital visits.

✓ **A calmer environment**  
RoomMate uses a sound-free alert system, so there are no alarms or disturbances - helping everyone enjoy a more peaceful day and a better night's sleep.

